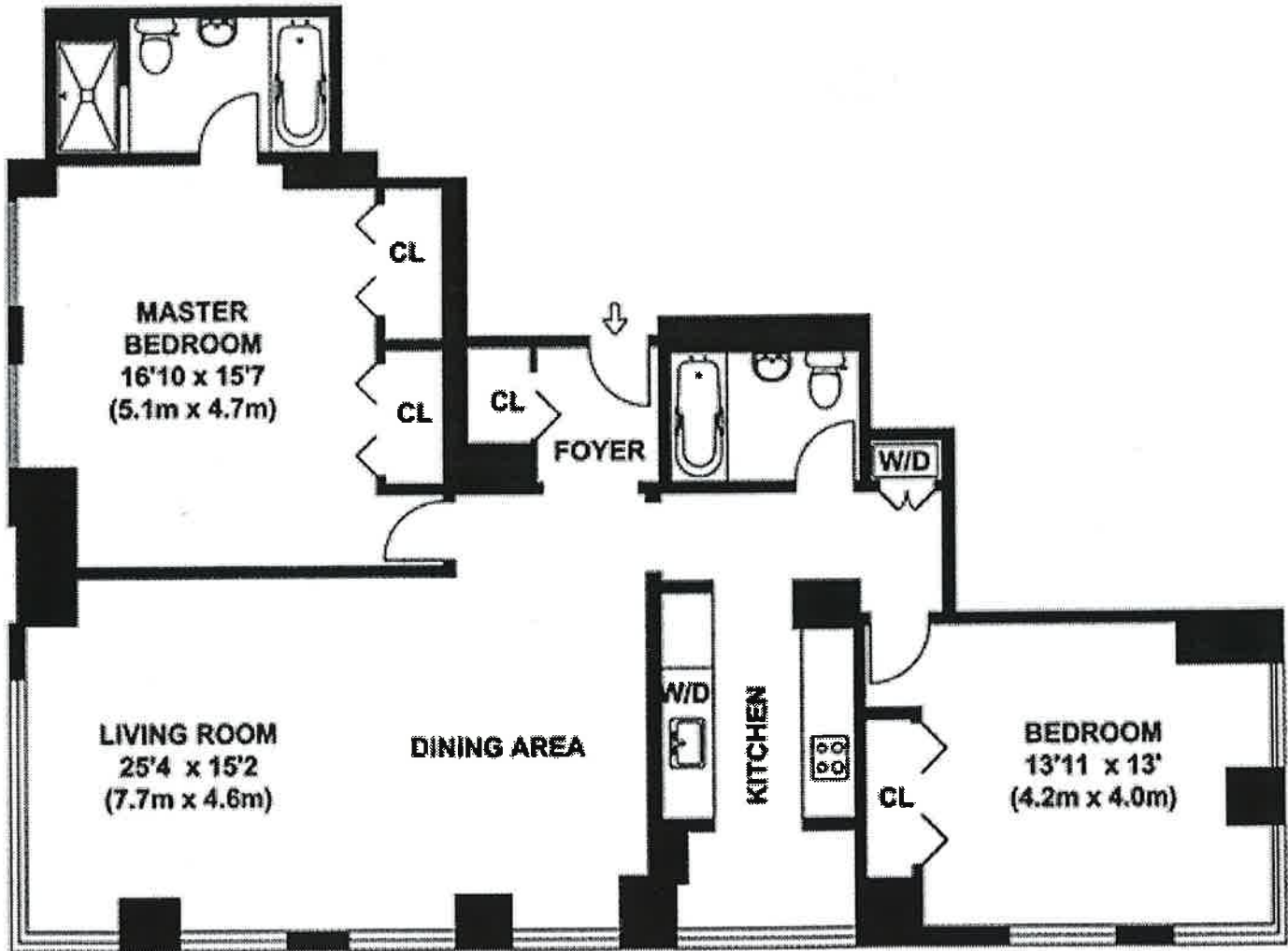


Typical Two Bedroom Layouts at the Mondrian Condominium

At 250 East 54th Street

Size Ranges : 1250 – 1300 sq ft



F-Line Layout

1253 sq ft Two Bedroom/Two Bathroom, SEW Exposures

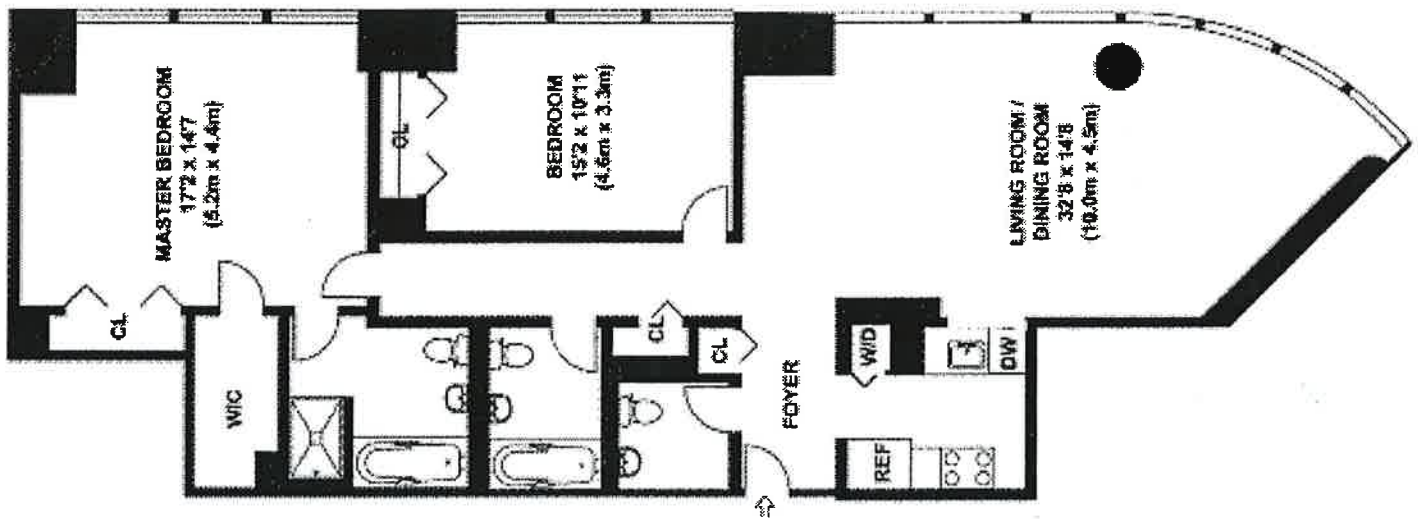
If you are interested in buying or selling a Two Bedroom Condo at the
Mondrian Condominium

Call Us Today at [917 837-8869](tel:9178378869)

Typical Two Bedroom Layouts at the Mondrian Condominium

At 250 East 54th Street

Size Ranges : 1250 – 1300 sq ft



B-Line Layout

1255 sq ft Two Bedroom/Two and Half Bathroom, NE Exposures

If you are interested in buying or selling a Two Bedroom Condo at the

Mondrian Condominium

Call Us Today at [917 837-8869](tel:9178378869)