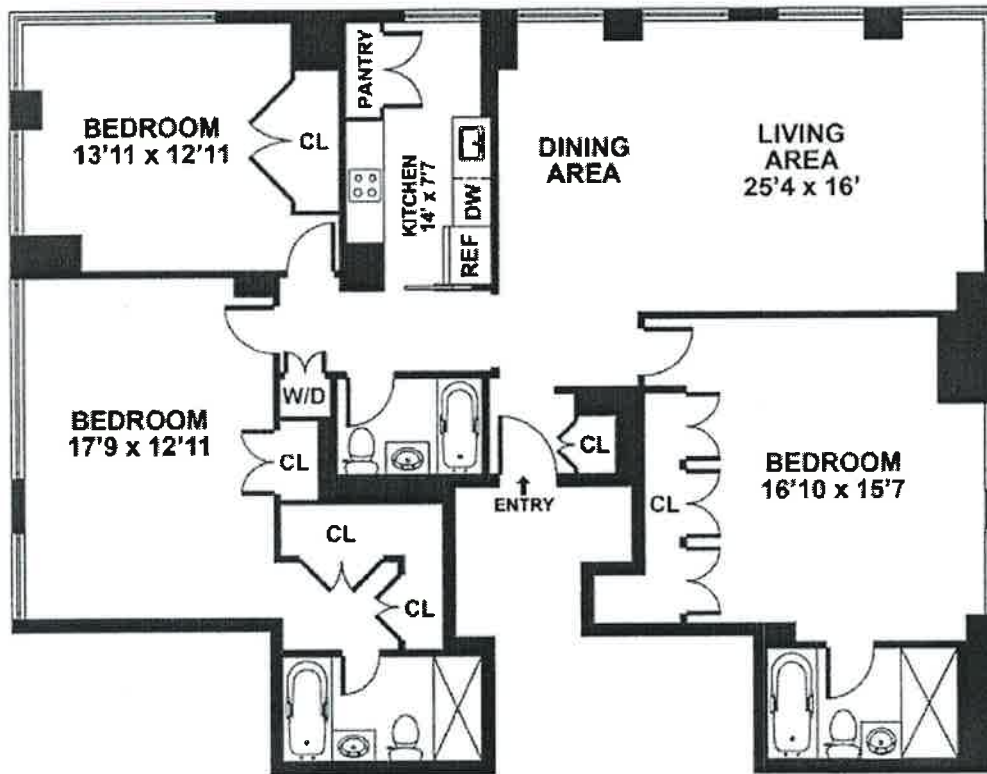


## Typical Three Bedroom Layout at the Mondrian Condominium

At 250 East 54<sup>th</sup> Street

Size Ranges : 1300 – 1650 sq ft



**D-Line Layout  
Three Bedroom/Three Bathroom, SWE Exposures**

**If you are interested in buying or selling a Three Bedroom Condo at  
the Mondrian Condominium at 250 East 54<sup>th</sup> Street**

**Call Us Today at [917 837-8869](tel:9178378869)**